



# Star Lake Protective Association

Star Lake, New York 13690

June 1, 2016

Hello Star Lake neighbors,

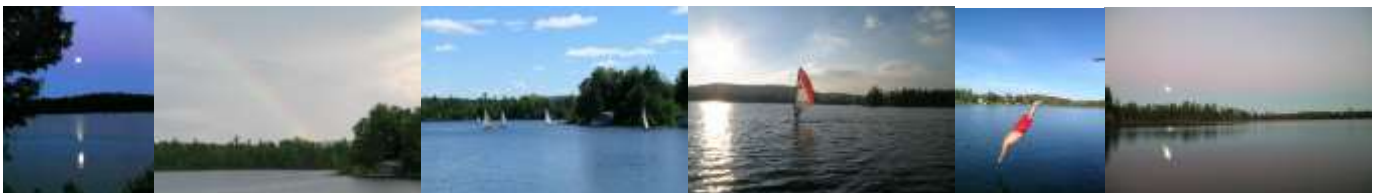
"Welcome back" to those returning to the lake from wherever you spent the winter. For those who stay year-round, we made it through another rather easy winter. Spring is finally upon us. Dull greys have turned to lush greens; flowers are blooming, ducks and loons have returned and the ice is gone! Star Lake has awakened to begin another great lake season. It's also a good time for you to consider joining the SLPA in our efforts to keep the lake clean and beautiful; and, to have some fun with us as well.

Joining the SLPA provides a number of benefits. Membership gives newcomers to the lake a good way to meet their new neighbors in this unique lake community. Meetings, held twice a year, provide a forum to discuss lake issues and to renew old friendships. Just \$20 in dues gives you a voice and vote in various lake matters. Membership also provides a password to the Members' Area of our web site, access to a Star Lake web cam and a \$5 discount on registration for the poker run! We encourage you not only to join the SLPA; but also to attend our meetings and participate in our various lake activities.

SLPA activities include organizing lake clean-ups twice a year for eleven years now, helping to keep the roads around the lake looking clean for all to enjoy. We are also planning the 12th annual poker run, a well-attended social event with cash prizes and a party on the sandbar following. You need not be a member to benefit from or participate in any of these lake activities—just come out, meet your neighbors and have a good time! Of course, we would really like you to become a member as well.

The SLPA continues to support projects that benefit the lake. Members' dues have financed the purchase and placement of buoys on rock bars around the lake. We fund and maintain a web site devoted to the lake for all to enjoy ([slpa.info](http://www.slpa.info)); and we published and printed the *Star Lake Handbook*, soon to be in its fourth edition. We once financed a professional study of tent caterpillars that recently devastated our area. Our dues also fund worthy projects that place flowers, flags and banners around the community. The SLPA made a sizeable contribution to the new Clifton-Fine Medical Clinic. We also support the SOS 5K walk/run. Recently, we asked the DEC to better-monitor the public carry-on boat launch more frequently to help avoid recent, on-going problems. We continue to periodically monitor our water quality with a sampling and testing program. In partnership with the *NYS Adirondack Park Invasive Plant Program*, we inspected the lake's shoreline for invasive plants such as milfoil, which have devastated other neighboring lakes and waterways, including Lake Bonaparte, Cranberry Lake, and the Little River flow. No invasive plants have been detected in our lake so far. However, we all need to be proactive about keeping invasive species OUT of our lake.

Member or not, we would appreciate your help with some important items of common interest. If you rent out your property or provide lake access to others and if your tenants or guests are planning to launch any water craft of any size, *please* ask them to carefully inspect and clean their boat, motor, trailer and gear *before launching* to insure that no milfoil or other invasive species get anywhere near the lake. You could also encourage boat and jet ski operators to acquire proper licenses and certification to ensure that Star Lake remains a fun, safe place for people to enjoy. Everyone using the lake should review NYS boater safety rules and regulations. Those who use the lake should be aware of the informal customs of the lake, such as general counterclockwise traffic flow. This information, along with where the shallows on the lake are and the 5 mph zones can be found in the *Star Lake Handbook* and might be made available to renters and guests. Also, our web site has a map with this information and much more. ([http://www.slpa.info/Rules\\_of\\_lake.htm](http://www.slpa.info/Rules_of_lake.htm) or <http://www.slpa.info/SLHandbook.htm>). Please help to keep the lake and its environment safe and clean for all to enjoy.





If you join the SLPA, please consider becoming an *active* member. Out of 170+ lake property owners, only 60-75 were represented as members over the past several years. Meeting attendance averages 30-40 and only a very few actually help with the planning, organizing, and execution of lake activities. We would appreciate your dues to help finance SLPA programs; *but, more important*, we would like more members to actively contribute their time and efforts to help us to achieve our common goals. Please join *and* help us to achieve our goals.

Our next meeting will be Saturday, June 25<sup>th</sup> at 10:00 am at the Adirondack Exhibit Center where the SLPA once traditionally held their meetings. Refreshments and socializing will precede the meeting. If you have anything you'd like to add to the agenda for discussion, please contact me at least a week before the meeting. Minutes of the 2015 Annual Dinner Meeting held last fall are available for review on our website; or you can contact me at (315) 848-2169 to obtain a copy. We have also tentatively scheduled our Annual Meeting for Saturday, August 27<sup>th</sup> at the Haven on Star Lake (formerly Houghton Campus). We hope to see you there!

Since you are receiving this letter, we must not have your e-mail address. You can help us out by sending me your e-mail address at [bo\\_ritchings@slpa.info](mailto:bo_ritchings@slpa.info) or by using the feedback form at [slpa.info](http://slpa.info). Correspondence via e-mail helps to keep our mailing costs down. This letter is generally the only communication to all lake owners; but, we occasionally send notices out during the year via e-mail if we have your address.

The SLPA benefits *all* who enjoy the lake, members or not. Perhaps you have contemplated joining the SLPA in the past. Or, you are new to the community. Or, you were once a member; but quit for one reason or another. In any case, *now is the time to join* the only organization that represents your Star Lake waterfront interests. We hope that you will continue to support the Association with your membership and contributions of time, effort and dues. Please take a moment now to send your 2015 dues (\$20). Make the check payable to "Star Lake Protective Association" and send or give it to Tess Golden, our treasurer.

Thank you, in advance, for your support of the SLPA. With your help, the Star Lake Protective Association will continue its 115-year tradition of enhancing, protecting, preserving and serving this beautiful lake and its community environment.

See you on the lake!

Bo Ritchings, Secretary  
Star Lake Protective Association

**Please Send Dues to:**  
Theresa Golden, SLPA Treasurer  
P. O. Box 63  
Star Lake, NY 13690

2016 SLPA OFFICERS ARE:		
President	Vito Testone	848-3476
Vice President	Daphne Henri-Foley	281-381-6119
Treasurer	Tess Golden	848-2745
Secretary	Bo Ritchings	848-2169

2016 SLPA Meetings and Events			
Date	Event	Place	Time
Sat, June 25	Regular Meeting-socializing/refreshments; meeting to follow	Adirondack Exhibit Center (Old Schoolhouse--SOS)	10:00 am
Wed, July 13	First Lake Road Clean-up	Meet at CFCS (school) parking lot	9:00 am
Sat, July 16	Benson Mines Tour (rain date: July 17)	Meet at George's Gravel Pit, Rt. 3	10:00 am
Sat, Aug 6	12th Annual Poker-Run	Meet at the sandbar to register	12:00 noon
Wed, Aug 17	Lake Shoreline Clean-up (if there are enough volunteers)	Sandbar	1:00 pm
Sat, Aug 27	Annual Dinner Meeting - 5:00 Cocktails, Meeting, Dinner	The Haven at Star Lake (former Houghton Lodge)	5:00 pm
Wed, Sept 7	Second Lake Road Clean-up	Meet at CFCS (school) parking lot	9:00 am

This year, considerable State and Federal resources have been devoted to detection and control of aquatic invasive species which threaten our waterways. We now have a boat washing/inspection station down by the old J&L site where your boat can be steam cleaned and inspected for invasive "freeloaders" that can find their way from an invaded lake to another clean lake, such as ours. Star Lake is, so far, free from such problems caused by milfoil found in neighboring bodies of water such as Cranberry Lake, Lake Bonaparte, and the Little River Flow. We, as stewards of the lake, need to take a proactive approach to invasives in order to keep them out of Star Lake. Please help by following the guidelines below, especially if you allow others to launch watercrafts

of any kind on your property. Encourage those who want to launch at your site to first get their boats and trailers cleaned. Discard any vegetation found, no matter how small, into a garbage container, away from the lake shore. It only takes a small sprig of milfoil to take root and start an infestation that will change the lake environment forever. Please do your part in keeping our lake free from these invasive plants!



## STOP AQUATIC HITCHHIKERS!

**Prevent the transport of nuisance species.  
Clean all recreational equipment.**

[www.ProtectYourWaters.net](http://www.ProtectYourWaters.net)

Aquatic invasive species are non-native plants and animals that can degrade a body of water, impair boating and fishing, threaten native plants and animals, and destroy habitat. Once aquatic invasive species are established, eradication is almost impossible.

**When you leave a waterway:**

- Check for and remove any visible plants or debris
- Clean and drain your boat and equipment
- Dry everything that came into contact with water

WATERCRAFT CHECK POINTS



© 200 (1/13)

### Aquatic Invaders to Look Out For:



**Water Chestnut**

- Triangular leaves with toothed edges
- Sharp-edged seeds
- Can form dense mats

E. Smith, APFP



**Zebra/Quagga Mussel**

- Tiny D- or oval-shaped striped shells
- Can cover hard surfaces
- Sharp shells can cut feet

J.E. Musick, UVM & S.F. Zedler



**Asian Clam**

- Light green to brown shells with circular elevated ridges
- Typically less than 1/2-inch in size
- May outcompete native clams/mussels

E. Terhune



**Eurasian Watermilfoil**

- Feathery leaves in whorls of 4
- Forms dense beds
- New plants sprout from fragments

A. Pitt, Rutgers.org & Michigan DNR



**Spiny Waterflea**

- Tiny crustacean with long, barbed tail
- Competes with small fish for food
- Masses can clog guides of fishing rods

D.W. & J. Conditon, MN Sea Grant



**Hydrilla**

- Four to 8 blade-like, slightly toothed leaves form whorls around stem
- Can form dense plant beds
- Thrives in a variety of environments

D. Mowbray, A. Vanni, Ingress.org



To learn more about how you can help stop the spread of aquatic invasives, scan this QR code with your smartphone or visit [www.dec.ny.gov/animals/48221.html](http://www.dec.ny.gov/animals/48221.html)



**STOP AQUATIC HITCHHIKERS!**  
Prevent the transport of nuisance species.  
Clean all recreational equipment.



NYS Office of  
Parks, Recreation  
& Historic Preservation



NYS Dept. of  
Environmental  
Conservation

DEC AIS (11/12)